

ArcGIS Pro

Migración desde ArcMap



ArcGIS Pro

¿Cuáles son sus características?

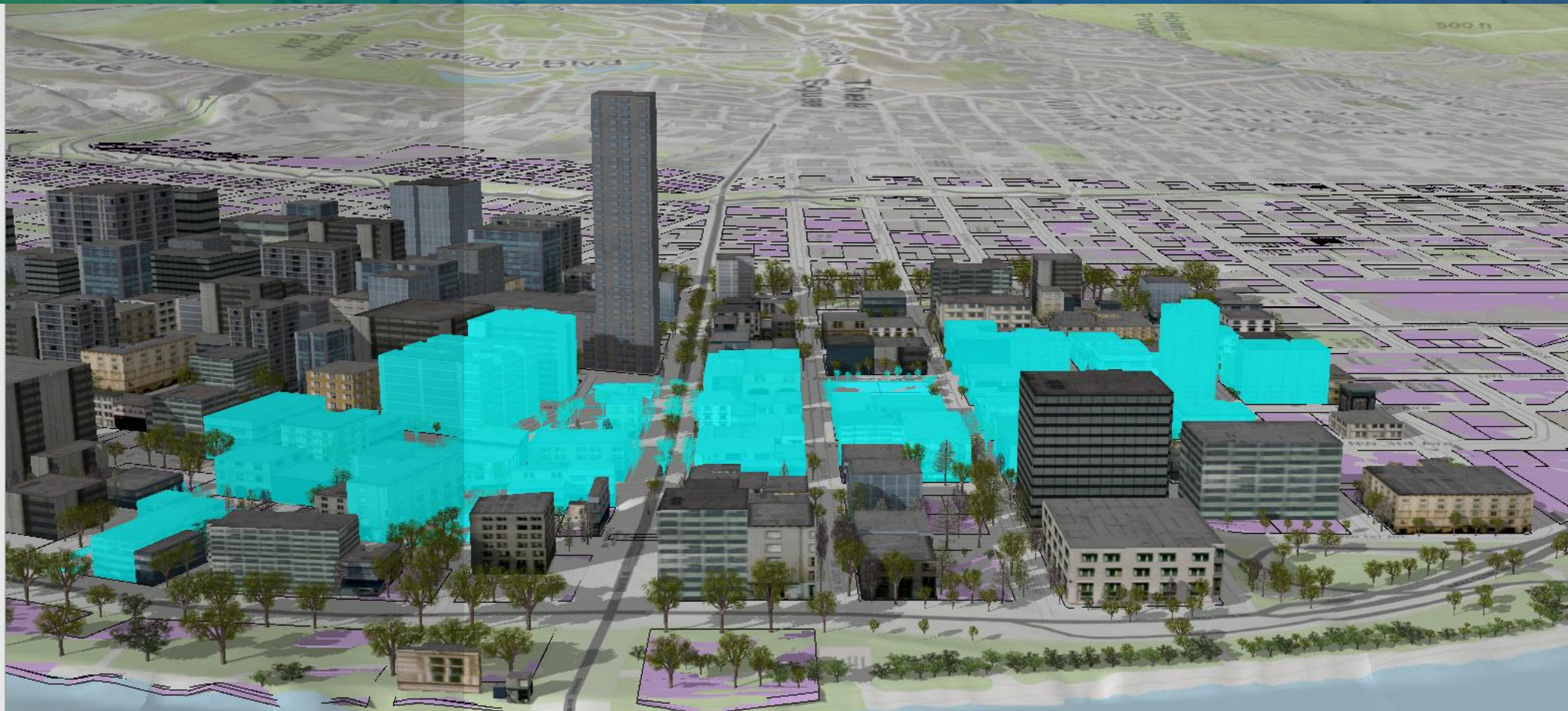
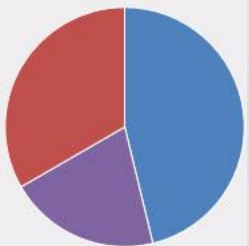
Select Layer:

OBJECTID	name	TreeFID
262	Grand Fir	Tree/20268
263	European Beech	Tree/20269
264	Ponderosa Pine	Tree/20270
265	Ponderosa Pine	Tree/20271
270	Northern Red Oak	Tree/20276
276	Grand Fir	Tree/20282
397	European Beech	Tree/20412
398	Grand Fir	Tree/20413
399	Grand Fir	Tree/20414
400	Ponderosa Pine	Tree/20415
401	Ponderosa Pine	Tree/20416
402	Northern Red Oak	Tree/20417
403	Northern Red Oak	Tree/20418
404	Northern Red Oak	Tree/20419

Selected Feature Count by Layer

Feature Layers

- Trees
- Parcels
- Buildings



ArcGIS Pro | Aplicación de escritorio para profesionales SIG



Toma de
decisiones

2D y 3D

Múltiples fuentes
de datos

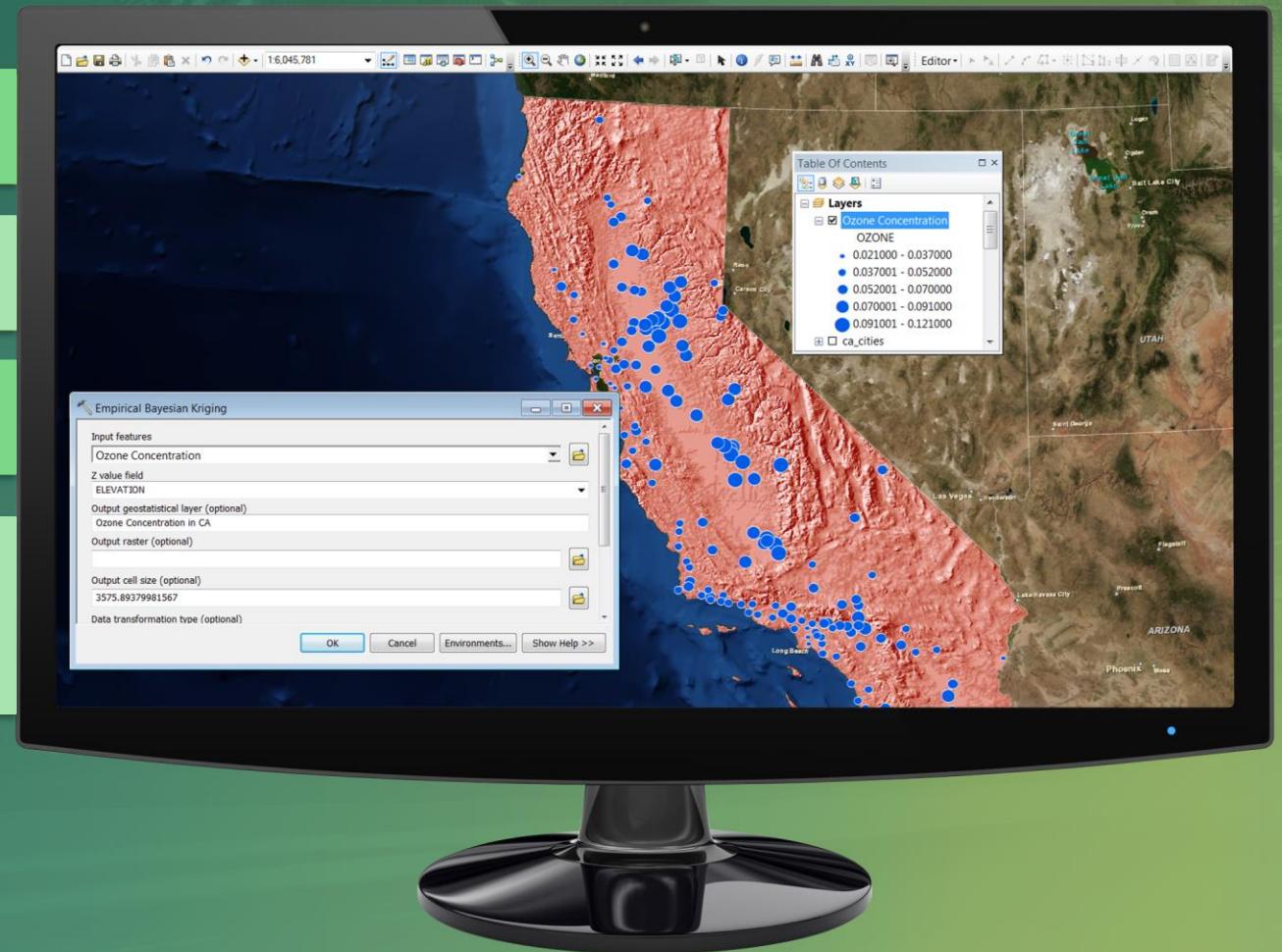


Administración de datos

Realizar análisis avanzados

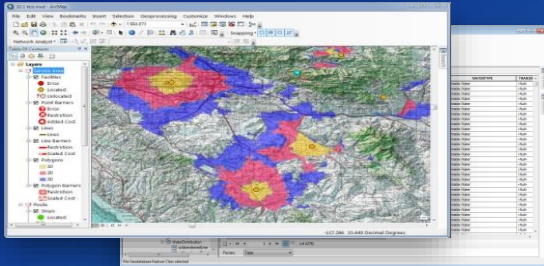
Modelar y automatizar flujos de trabajo

Mostrar sus resultados en mapas de
calidad profesional

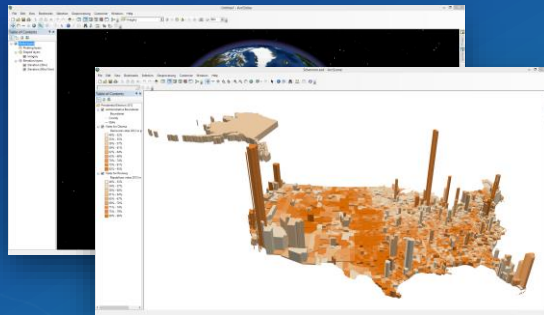


ArcGIS Pro | Fusión de aplicaciones

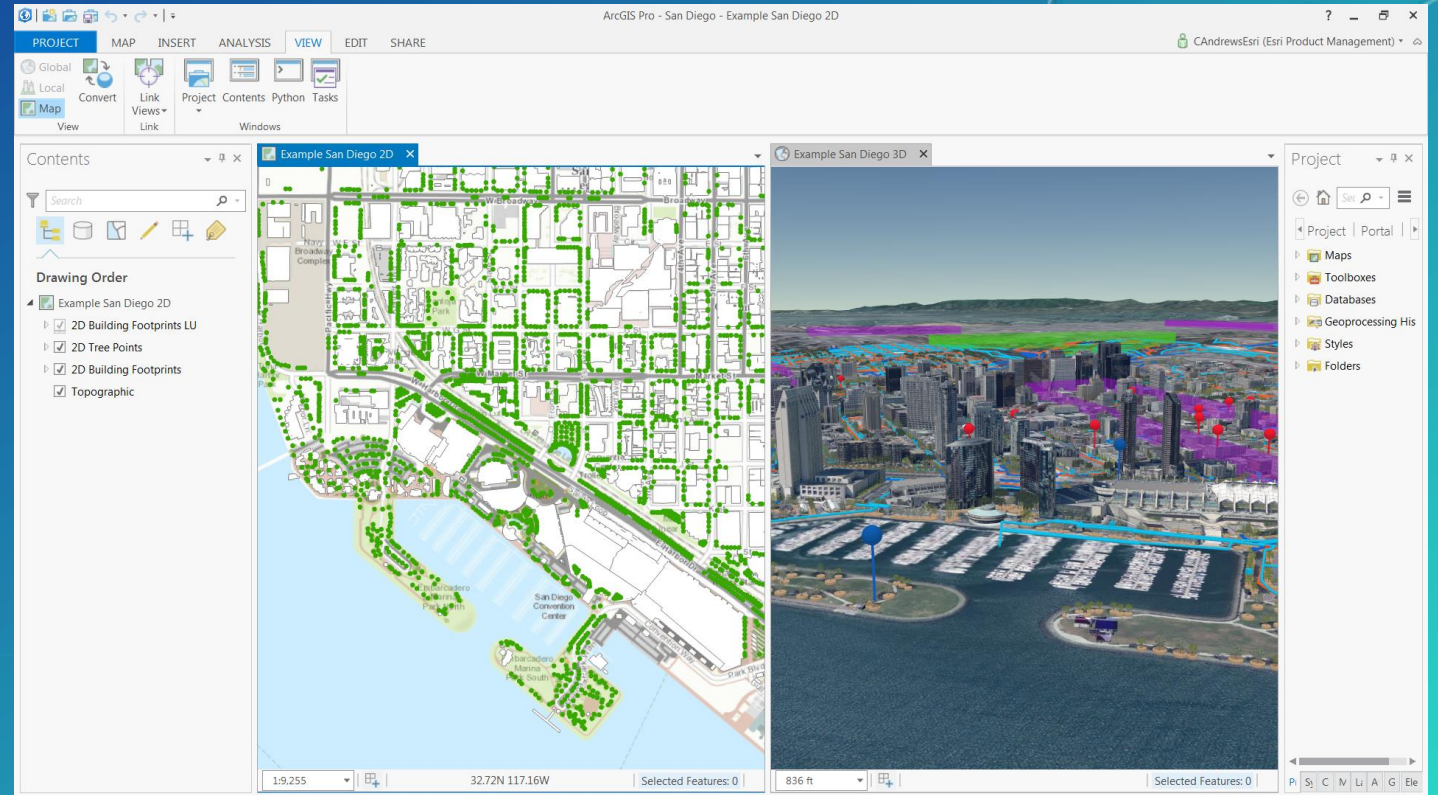
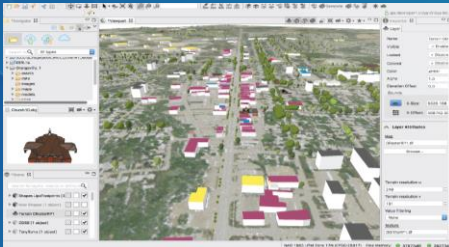
ArcMap / ArcCatalog



ArcGlobe / ArcScene

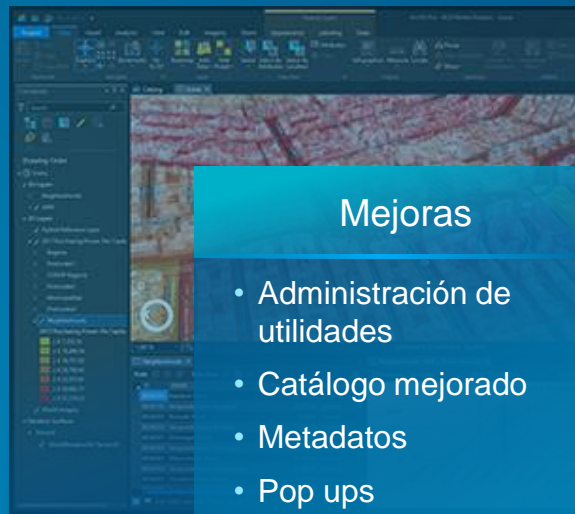


CityEngine



Pro 2.2

- 64 Bits, multitarea
- Interfaz de usuario simplificada
- Integración con ArcGIS Online
- Combina experiencias 2D/3D
- Múltiples mapas y layouts
- Todas las herramientas de análisis
- Consulta y búsqueda simple



Mejoras

- Administración de utilidades
- Catálogo mejorado
- Metadatos
- Pop ups
- Geoprocesamiento por lotes
- Pausar dibujo

Novedades

- edición multipatch 3D
- Reglas de atributo
- Vídeo de movimiento completo
- Streaming de capas
- Recorte de zona UTM
- Integración Revit
- Inteligencia artificial

Próximamente

- Gestión de parcelas
- Dimensiones
- Informes
- Publicar en el servidor
- Impresión en offset
- interpolación 3D
- Datos no estructurados
- Vóxeles



ArcGIS Pro

¿Cómo empezar a trabajar?

QUESTIONS?

Guía de terminología

Videos

Ayuda de ArcGIS Pro

Quick-start tutorials

Migrate content

Navigate your data

Symbolize your data

Label your map



Learn for ArcGIS

Learn ArcGIS - Lesson Gallery - Support

Get Started with ArcGIS Pro

Overview | Lessons

Overview

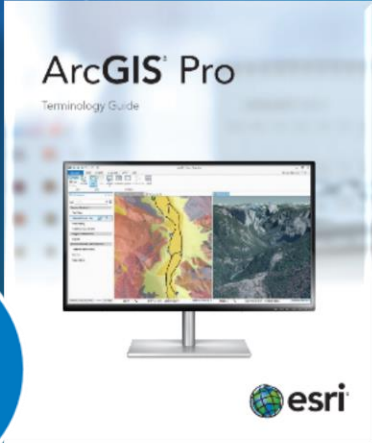
Spanning a series of islands in a shallow lagoon, the city of Venice is renowned for its beauty. But that beauty comes at a cost. The lagoon's tidal patterns mix with the islands' low elevation to cause acqua alta (high water), a periodic flooding that affects most of the city. Although not a threat to human life, acqua alta impedes transportation and endangers Venice's priceless architecture—and the problem is getting worse.

Historically, an exceptional tide (defined as 1.4 meters above sea level) occurs about every four years. In the past decade, however, exceptional tides have become an annual event. Efforts to chart, analyze, and control acqua alta will be crucial to protect Venice in the future.

In these lessons, you'll travel to Venice with ArcGIS Pro. You'll build a 2D map of the city with canals, structures, and some of Venice's most famous landmarks. Then, you'll convert the map into 3D. You'll analyze and quantify the threat of acqua alta, before giving your scene a realistic appearance to show others.

Build skills in these areas:

- Adding data to a map
- Editing features
- Creating a scene
- Analyzing raster data



Essential Terminology or Functionality That's New to ArcGIS® Pro

ArcGIS® Pro	Usage	Similar Concepts in Other ArcGIS® for Desktop Applications
Project	A collection of related geographic data, maps, scenes, tools, settings, and connections, stored in a file.	
Map	The project item used to display and interact with geographic data in two dimensions on a geographic or map view.	Data frame
Scene	The project item used to display and interact with geographic data in three dimensions.	Global scene, ArcGlobe® document, 3D city scene, ArcScene® document, local scene
ribbon	The rectangular area across the top of the ArcGIS Pro interface of tools that perform a common task.	ribbon interface menus and buttons
tab on the ribbon	A section on the ribbon that groups related or related tasks.	ribbon
view	The view pane displaying the primary work area of the application.	Desktop for a map view or local scene, but there can be other tabs in ArcGIS Pro.
Active view	The view pane currently being worked on. The active view controls the contents of the ribbon.	Active data frame
Raster	A collection of data that contains information about its contents.	Raster data viewer
Editing	A set of tools used to modify or create new geographic data.	
Tools	A set of preconfigured tools to guide users through a workflow or business process.	Desktop for functionality in the Task Assistant Manager interface
User Access Toolbar	A collection of icons located on the ribbon that control ArcGIS Pro's core functionality.	
Portal	Connection to an ArcGIS Online or ArcGIS Enterprise organization.	Desktop, ArcGIS, ArcGIS.com or ArcGIS Enterprise, ArcGIS Pro, ArcGIS Pro for Project, or ArcGIS Pro for iOS

Introducción a ArcGIS Pro

esri Industries Products Support & Services About Community

Training

Main Training Catalog My Training News Certification Common Questions

Getting Started with ArcGIS Pro

Go to Course

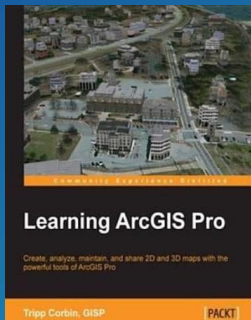
Format: [Web Course](#)
 Duration: 1 module (3 hours)
 Price: Free
 ArcGIS Version: 10.3
 Authored by Esri

Learn the essential concepts you need to know to jumpstart your productivity with ArcGIS Pro. This course introduces the ribbon-style interface, project-based organization, and key capabilities of ArcGIS Pro. You will get familiar with ArcGIS Pro terminology and practice with tools for mapping and visualization, editing data, performing analysis, and sharing your work.

New Catalog Search

Questions?
 Contact us via e-mail or call toll-free at 888-377-4575 (select option 3, between 8:00 AM and 5:00 PM (Pacific Time)).

Publicaciones





esri[™] Colombia

THE SCIENCE OF WHERE[™]