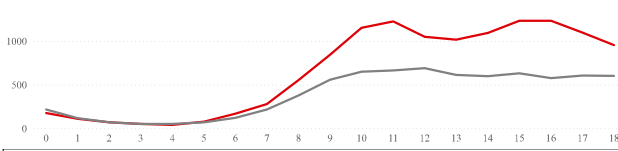


Fecha: 27/03/2023
 Pos: Todas | Payment: Todas | Currency: Todas | Payment_Type: Todas | Source: CPD

- Se evidencia una disminución del 16% en el ingreso transaccional en comparación con LW asociado a los días festivos de la semana santa
- El 46% de los rechazos se asocian a reglas de antifraude.
- La información incompleta en las gráficas CW y LW se debe a problemas con el archivo fuente de CPD, caso reportado y en proceso de solución.

Total Transaction by Hour

● TX CW ● TX LW



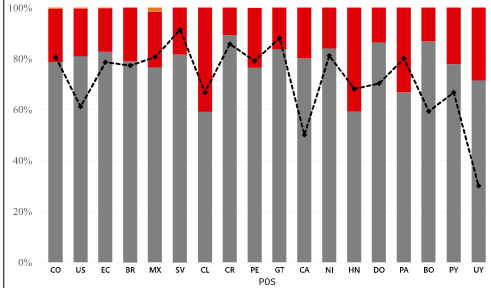
	TX CW	TX LW	VAR TRX
	12411	7,473	66.1%
APB CW	9825	5,960	64.8%
RJCT CW	2535	1,513	67.3%
%RJCT BY CYBS	9.5%	10%	

VAR CW vs LW



Tx Status by POS

PAYMENT STATUS ● 1.Approved ● 2.Rejected ● 3.Others ● LW Approval rate



POS	TX CW	TX LW	VAR TX	SALES CW USD	SALES LW USD	SALES VAR
CO	858	5,981	-8.3%	1,894,807	1,315,827	-41.0%
US	1493	162	821.6%	981,804	107,702	811.6%
EC	959	28	3,325.0%	261,422	5,540	4618.5%
BR	261	202	29.2%	208,675	203,761	2.4%
MX	256	273	-6.2%	144,382	169,392	-14.8%
SV	141	208	-32.2%	81,720	121,644	-32.8%
CL	139	159	-12.6%	126,092	188,544	-33.1%
CR	139	7	1,885.7%	85,501	3,364	2441.3%
PE	119	124	-4.0%	104,602	77,267	35.4%
GT	86	84	2.4%	41,427	37,694	9.9%
CA	85	2	4,150.0%	64,588	737	8668.6%
NI	50	69	-27.5%	26,798	43,325	-38.1%
HN	49	47	4.3%	20,723	21,690	-4.5%
DO	44	57	-22.8%	22,301	42,899	-48.0%
PA	21	30	-30.0%	8,703	15,960	-45.5%
BO	15	27	-44.4%	13,387	17,469	-23.4%
PY	9	3	200.0%	3,387	1,274	165.9%
UY	7	10	-30.0%	9,237	7,709	19.8%

% CYBS Rjet by POS

● % Reject by CYBS ● %LW_Reject by CYBS



POS	%LW_REJECT BY CYBSRC	% REJECT BY CYBSRC
CO	7.3%	5.7%
US	31.4%	12.3%
SV	3.8%	9.9%
EC	10.7%	9.3%
ES		
BR	11.9%	5.4%
MX	8.8%	11.2%
GB		
CR	14.3%	7.9%
AR		
CL	15.1%	13.7%
PE	8.9%	7.6%
CA		8.3%
GT	4.8%	4.7%
NI	15.9%	10.0%
HN	14.9%	22.7%
DO	15.8%	9.1%
PA	20.0%	23.8%
BO	18.5%	11.1%
PY		

PSP & FRANCHISE APPROVALS

Fraud: Selección múltiple

Franchise POS	AX	DC	DS	MC	PSE	UATP	VI
CO	97.2%	97.1%		95.1%	62.2%	66.7%	94.4%
US	97.2%	100.0%	76.5%	93.4%		36.4%	92.3%
EC	89.2%	95.8%	83.3%	88.9%		83.3%	92.2%
BR	81.8%			78.6%			89.5%
MX	90.0%			90.0%	100.0%	50.0%	85.5%
CR	100.0%			93.3%			98.2%
SV	85.7%	100.0%	100.0%	77.3%			95.3%
PE	100.0%	100.0%		70.0%			82.0%
CL	100.0%			73.9%			65.2%
GT	100.0%			100.0%			85.3%
CA	50.0%			91.7%	100.0%		88.0%
NI	100.0%			85.7%			96.6%
DO	100.0%			92.3%			96.0%
HN	100.0%			70.0%			100.0%
PA	100.0%			100.0%			90.9%
BO	100.0%			100.0%			83.3%
PY	100.0%			50.0%			100.0%
UY	100.0%			100.0%			60.0%

DETALLE PAYMENT STATUS

PSP POS	GlobalCollect	SafetyPay	UATP	WorldPay
CO	94.9%	62.2%	66.7%	44.4%
US	100.0%		36.4%	93.0%
EC			83.3%	91.4%
BR				
MX		100.0%	50.0%	87.7%
CR				96.9%
SV				91.3%
PE				82.7%
CL				69.5%
GT				87.8%
CA		100.0%		87.0%
NI				93.3%
DO				95.0%
HN				90.6%
PA				93.3%
BO				86.7%
PY				87.5%
UY				71.4%

