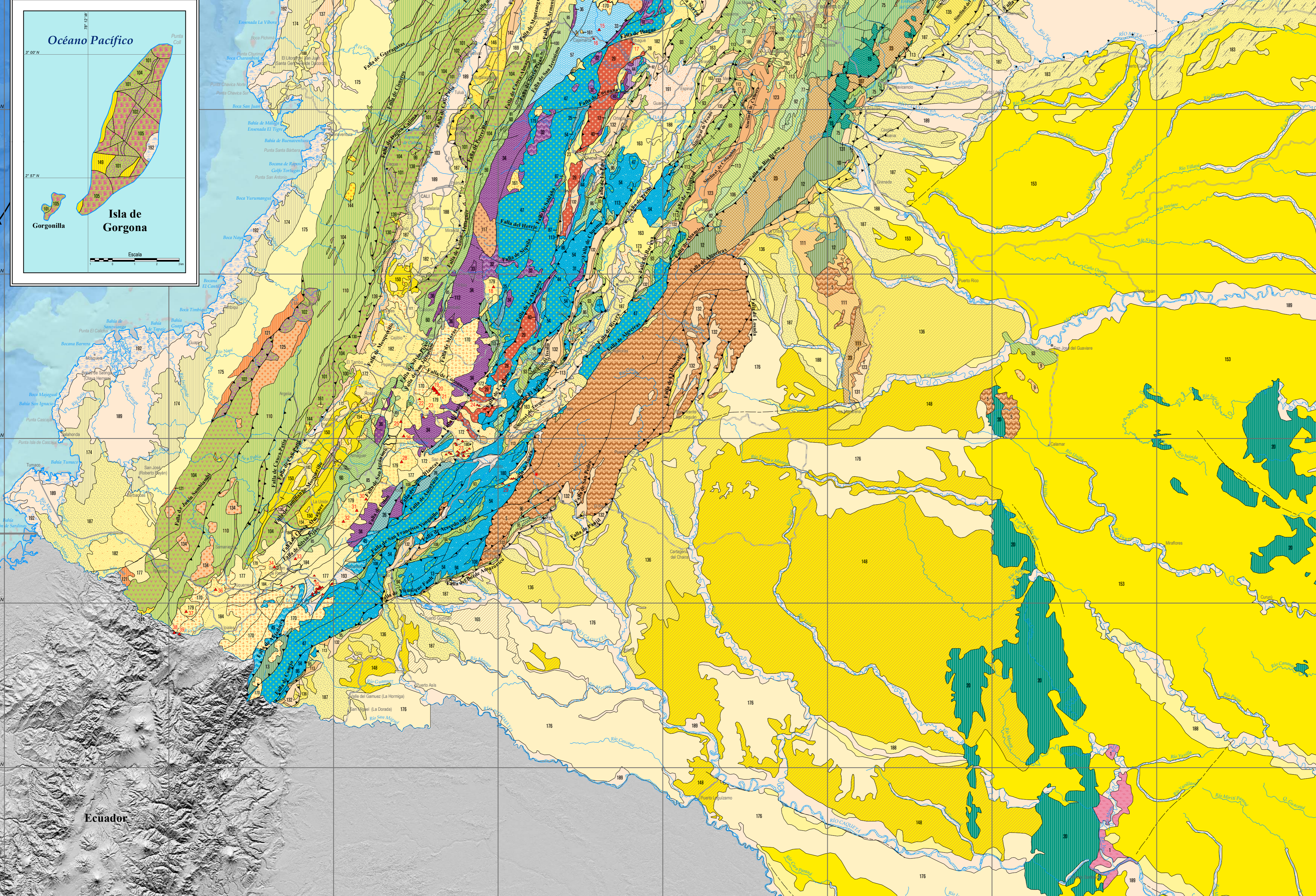
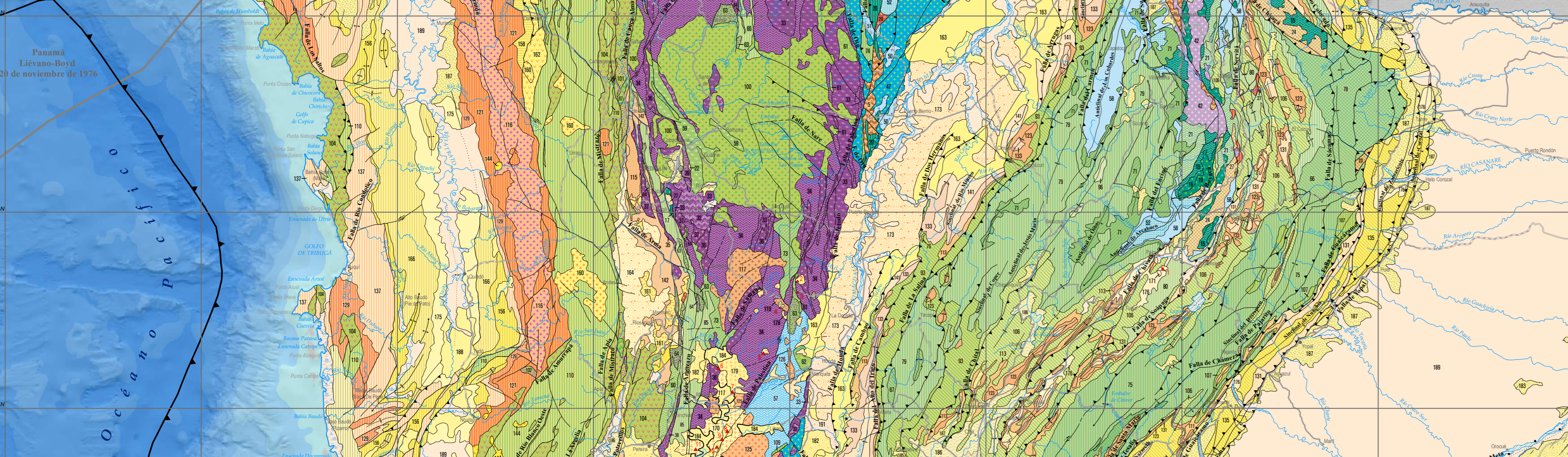


Legend (Legenda) table with columns for geological units and their corresponding symbols and colors. Includes a detailed stratigraphic column on the right side of the legend.



Administrative information including logos for COLOMBIA POTENCIA DE LA VIDA, SERVICIO GEOLOGICO COLOMBIANO, and the names of the Director General and Director Técnico.

Table of Volcanic centers of Colombia, listing names and coordinates for 20 different volcanic sites.

City crosshatched (Cita crossneada) information, including the source of the data and the scale of the map.

Cartographic sources (Fuentes cartográficas del mapa base) and projection information (Proyección cartográfica).

Geological Conventions (Convenciones geológicas) table, defining symbols for various geological features like faults, folds, and unconformities.

Resumen (Summary) text, providing an overview of the map's objectives and the data sources used.

References (Referencias) list, citing the scientific and technical sources used in the map's preparation.

Additional notes and contact information, including the date of the map's update and the website for more information.

